



PRE-ENGINEERED SOLUTIONS

888.733.9283
sales@seewaterinc.com
www.seewaterinc.com



See Water, Inc.
22220 Opportunity Way, Suite 101
Riverside, CA 92518

The See Water Advantage

See Water, Inc. manufactures a complete line of innovative pre-engineered sewage and wastewater control panels that will operate pumps up to 115 FLA. Our systems are built from quality components by skilled craftsmen at our manufacturing facility in Riverside, Calif. Most of our pre-engineered systems come standard with a five-year warranty and are UL 508A or UL 698A listed for the United States and Canada. If our pre-engineered line does not meet your spec, our custom capabilities options will meet and exceed your expectations.

In addition to providing the highest quality components and craftsmanship, See Water maintains an industry-leading lead time on all custom control systems.



Applications Serviced

- Lift Stations**
- OEM Solutions**
- Commercial**
- Industrial**
- Residential**
- Sewage Pump Chambers**
- Sump Pump Basins**
- General Dewatering**
- Industrial Sumps**
- Holding Tanks**



Certified UL Control Panel Manufacturer

UL 508A and UL 698A



Customer Service

Comprehensive Technical Support



Rapid Response

Response and Quotes Within 24 Hours



Lead Time

Industry-Leading Turnaround on All Systems



Complete Engineering Documentation

Full Submittal Packages



Quality and Cost

Highest Quality Parts and Components

20+

Experience

Innovative Engineering Team and Built by Quality Craftsmen

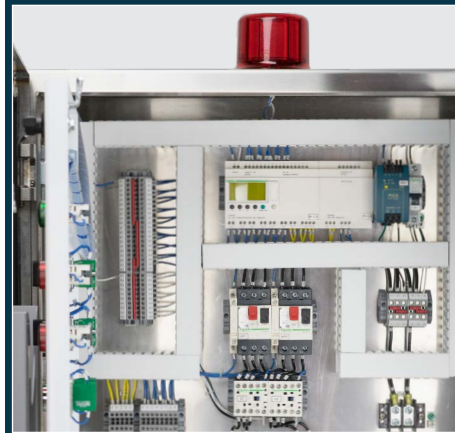


USA Made

All Custom Control Panels are Designed, Assembled and Tested in the United States



Proprietary Circuit Boards



PLC Control Systems



Touch Screen Interface Systems

Additional Features & Capabilities

- Alarm Flasher
- Anti Condensation Heater
- Capacitor Start/Run
- Custom Float Lengths
- Custom Panel and Metal
- Cycle Counters
- Elapsed Time Meters

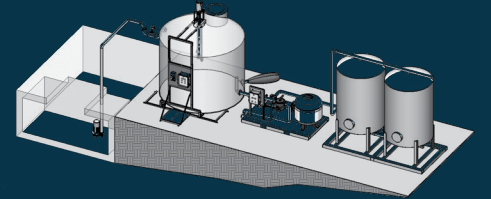
- Fabrication
- Fused Disconnects
- Generator Receptacles
- Inner Dead Front Door
- Intrinsically Safe Relays
- Lightning Arrestors
- Main Disconnect

- Phase Loss Relays
- Phase Monitor
- Pump Exerciser
- Seal Fail Circuit
- Stainless Steel Enclosure
- Thermal Cutout

Complete Engineered Documentation

See Water provides complete engineered documentation, including the following:

- Control Panel Layout and Schematic
- Detailed Component Submittal Data Sheets
- Complete Installation and Operator's Manual



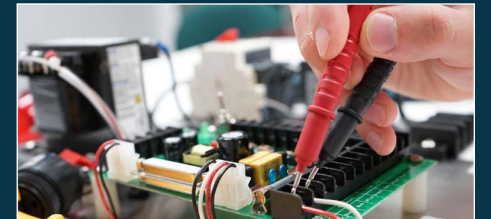
Full-Service Control Panel Manufacturer

See Water employs its own CNC machining for precise and accurate milling for all control panels.

- Increased Capability
- Expedited Lead Time
- Custom Enclosure Options

Quality Control

See Water is dedicated to producing high quality products which is why our qualified team thoroughly tests all products before shipment. In addition to remarkable quality control, See Water backs most pre-engineered products with a five-year warranty.

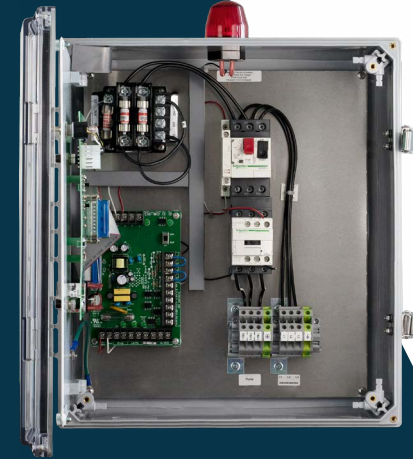


WS Series® Simplex Control Panels

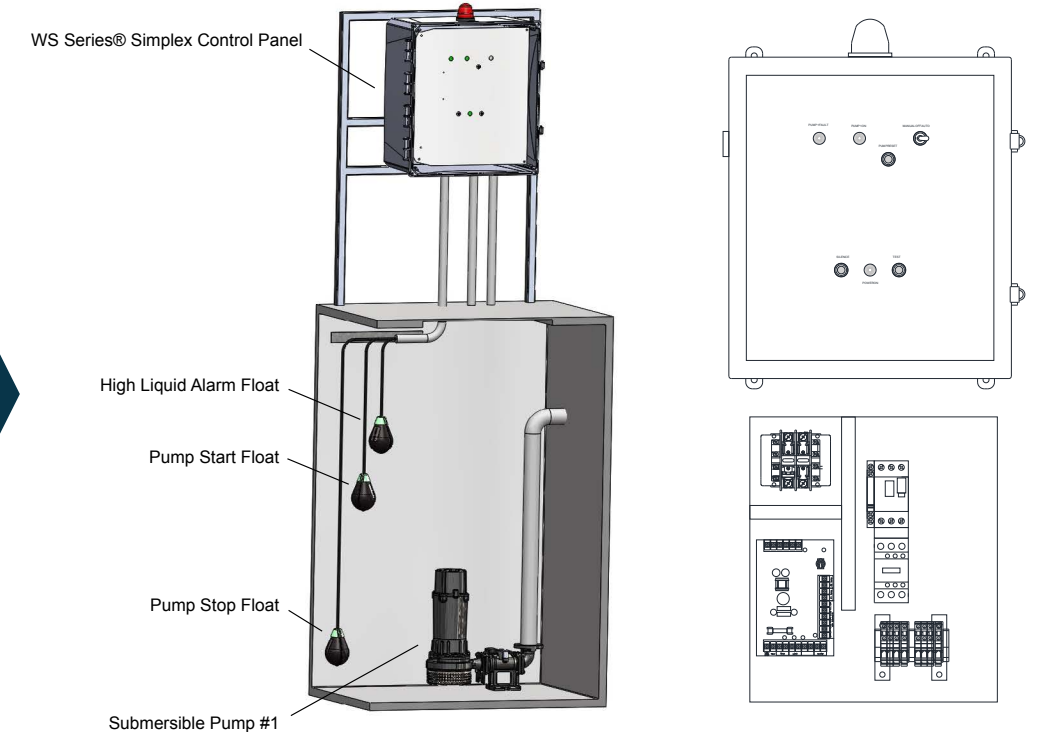
The WS Series® simplex control panel will control a single phase 120/208/240V or a three phase 208/240/480V pump for sewage pump chambers, sump pump basins and lift stations. See Water simplex control panels come standard with a clear front NEMA 4X rated enclosure, an IEC rated contactor and a motor protective switch. All panels are UL listed for the United States and Canada and come standard with a five-year warranty.



- UL listed for the United States and Canada (panel and controls)
- Indoor/Outdoor NEMA 4X panel enclosure: Heavy duty polycarbonate with stainless steel lockable latches
- Pump control visible indicators: Pump hand-off-auto (H.O.A.) switch, green pump run light, red pump fault light with reset button and power on light
- Alarm visible indicators: Red beacon alarm light, alarm test and silence buttons
- Alarm horn sounds at 85 decibels at 10 feet
- Remote monitoring by dry contacts: High liquid, pump fault, pump run
- Upgraded pump protection: Motor protective switch (branch circuit protection, adjustable overload and disconnect) and a thermal cutout with indicator



Typical Installation of WS Series® Simplex Control Panel



WS Series® Duplex Control Panels

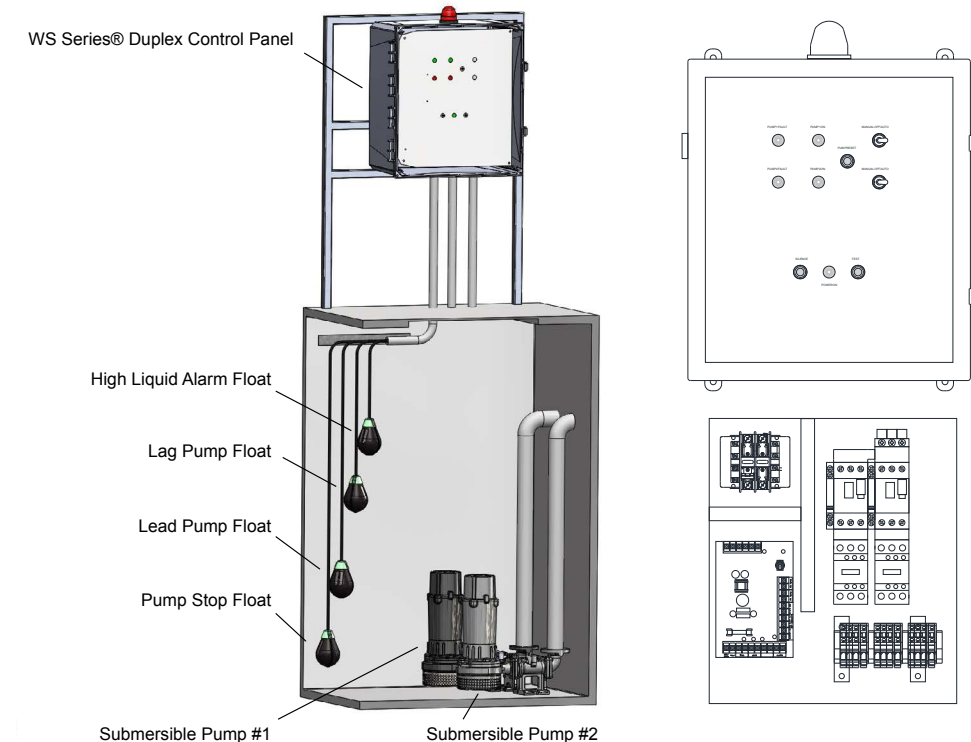
The WS Series® duplex control panel will control two single phase 120/208/240V or two three phase 208/240/480V pumps in dewatering, wastewater, and sewage applications. See Water duplex control panels come standard with a clear front NEMA 4X rated enclosure, IEC rated contactors and motor protective switch. All panels are UL listed for the United States and Canada and come standard with a five-year warranty.



- UL listed for the United States and Canada (panel and controls)
- Indoor/Outdoor NEMA 4X panel enclosure: Heavy duty polycarbonate with stainless steel lockable latches
- Duplex provides: Two pump alternation and high demand two pump operation
- Pump control visible indicators: Pump #1 and #2 hand-off-auto (H.O.A.) switch, green pump run lights, red pump fault lights with reset button and power on light
- Alarm visible indicators: Red beacon alarm light, alarm test and silence buttons
- Alarm horn sounds at 85 decibels at 10 feet
- Remote monitoring dry contacts: High liquid, pump run (s), pump #1 fault and pump #2 fault
- Upgraded pump protection: Motor protective switches included for both pumps (branch circuit protection, adjustable overload and disconnect) and thermal cutout with indicators



Typical Installation of WS Series® Duplex Control Panel



Knight Series® Liquid Level Alarms

• HLA

The HLA is designed for easy indoor installations and is equipped with external terminals for float and remote alarm status indication. The alarm panel will alert of potential threatening liquid level conditions.

- Plug and play for easy installation
- Includes 10' power cord
- NEMA 1 enclosure
- Includes one 20' narrow angle float
- Green power on light
- Audible alarm (85 decibel)
- Remote monitoring dry contact
- External terminal block



• HLA-4X

The HLA-4X is a robust alarm system housed in a NEMA 4X enclosure designed for areas that require protection against the elements.

- 120/208/240VAC
- NEMA 4X polycarbonate enclosure
- Includes one 20' narrow angle float
- Red beacon alarm light
- Audible alarm (85 decibel)
- Remote monitoring dry contact
- External terminal block
- Alarm test and silence buttons



• HLA-4X-X

The HLA-4X-X multiple alarm point alarm provides constant monitoring of potential threatening liquid level conditions at multiple points. The HLA-4X-X is available in a variety of models ranging from 2-10 alarm pit monitoring.

- 120/208/240VAC
- NEMA 4X polycarbonate enclosure
- Includes one 20' narrow angle float
- Red beacon alarm light
- Audible alarm (85 decibel)
- Remote monitoring dry contact
- External terminal block
- Alarm test and silence buttons



• Solar Knight® Liquid Level Alarm

The Solar Knight® liquid level alarm will notify maintenance personnel in the event of a high liquid condition. The system is complete with visual indicators and dry contacts to connect to a dialer (optional)

- Solar cell provides 24/7 continuous power to high liquid alarm panel
- Includes narrow angle float switch with 20' cord
- Includes 10 watt multi-crystalline solar panel, 12V, 9.0 amp hr. sealed rechargeable battery and solar charger
- Quick installation and low maintenance
- Easily accessible terminal block





PUMP PORTAL®

A New Breed of IoT Pump Monitoring System

The See Water Pump Portal® offers real-time, IoT monitoring and control of See Water's industry-leading products. The Pump Portal® extends familiar and popular features of its panel monitoring capabilities and controls to the cloud.

From a desktop or mobile device, pumps and water levels can now be monitored from anywhere at one's convenience. Real-time monitoring and access to historical data offers the ability to optimize any operation.



24/7 Monitoring



Remote Control



Analytics & Insights



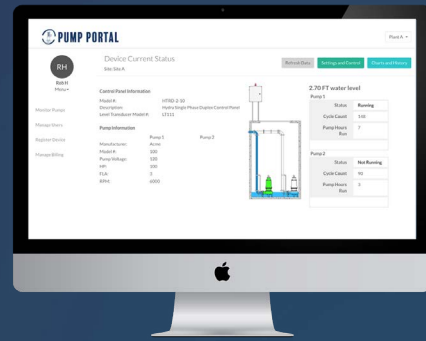
Diagnostics



Real-Time Alerts & Notifications



Cellular IoT Connectivity



Unlock the Value

Remote Monitoring

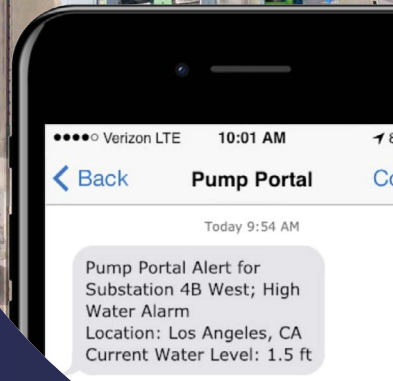
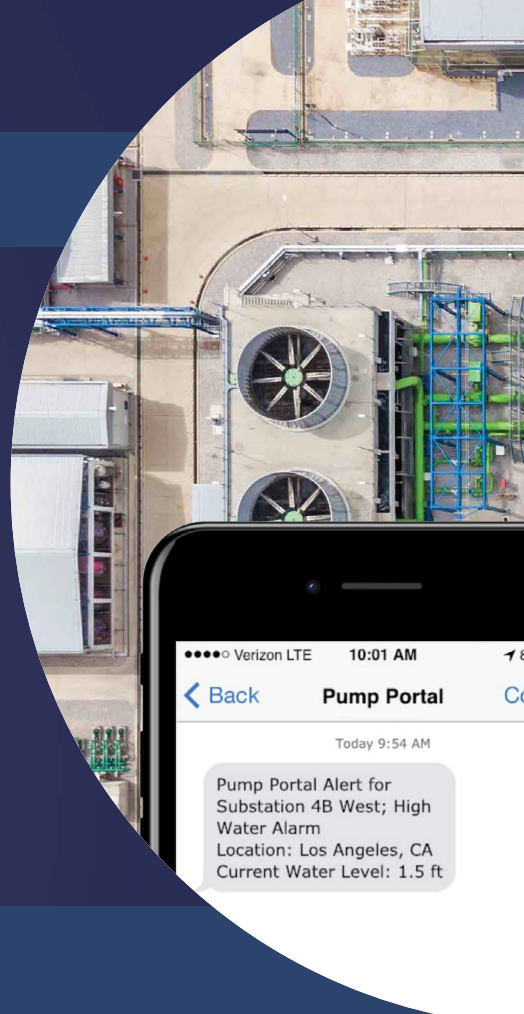
The Pump Portal® provides the same high-quality level of monitoring as the traditional See Water systems with the added benefit of remote access. The cellular connectivity enables deployments in remote locations without the worry of network interruptions.

Data Insights

The Pump Portal® provides data logging, dashboards and data export for critical metrics. Plus, we've integrated local weather to log and forecast precipitation. The system utilizes data to provide reports and smart alerts.

Centralize

Centralize the management of your pump station regardless of the size of the operation. The Pump Portal® offers a single platform to manage your pump monitoring needs such as data storage, access control, service logging and more.



888.733.9283

www.seewaterinc.com/pumpportal



888.733.9283
sales@seewaterinc.com
www.seewaterinc.com



See Water, Inc.
22220 Opportunity Way, Suite 101
Riverside, CA 92518